

**MODELO**

# GMK5165

**GRÚA HIDRAULICA**

# GROVE

**GH0014**
**ESPECIFICACIONES**

Marca	Grove
Modelo	GMK5165
Serie	51303391
Año fabricación	2013
Clase	Hidráulica
Tipo	Telescópica
Capacidad	165 Ust
Pluma principal	12,9 m a 60,0 m
Elementos telescópicos	6 cuerpos
Área de trabajo	360 grados
Elevación del boom	-03° a +83°
Tensión	24 V

**EQUIPAMIENTO**
**CARRIER**

Motor	Mercedes-Benz OM502LA.E3A/4
Serie	942.992-C-0881299
Potencia	390 kW (522 HP) @ 1800 rpm
Capacidad de tanque combustible	400 litros
Capacidad de reservorio hidráulico	200 litros
Engine emission: Euromot 3b / EPA / CARB	

**UPPER**

Motor	Mercedes-Benz OM904LA.E3A/1
Serie	904.971-C-1011353
Potencia	129 kW (175 HP) @ 2200 rpm
Capacidad de tanque combustible	200 litros
Capacidad de reservorio hidráulico	820 litros
Engine emission: Euromot 3b / EPA / CARB	

**CAPACIDADES**

Diámetro de cable	19 mm	cada winche
Longitud de cable	255 m	cada winche
Peso total del equipo	60 toneladas	
Peso contrapeso	40.1 toneladas	
	2.5 T	Base
	1 T	Contrapeso centro
	2.5 T	Contrapeso 2 und
	5 T	Contrapeso 4 und
	5.8 T	Contrapeso tipo mochila 2 und
Ganchos	75 T	5 poleas
	20 T	1 polea
	8 T	Gancho tipo bola

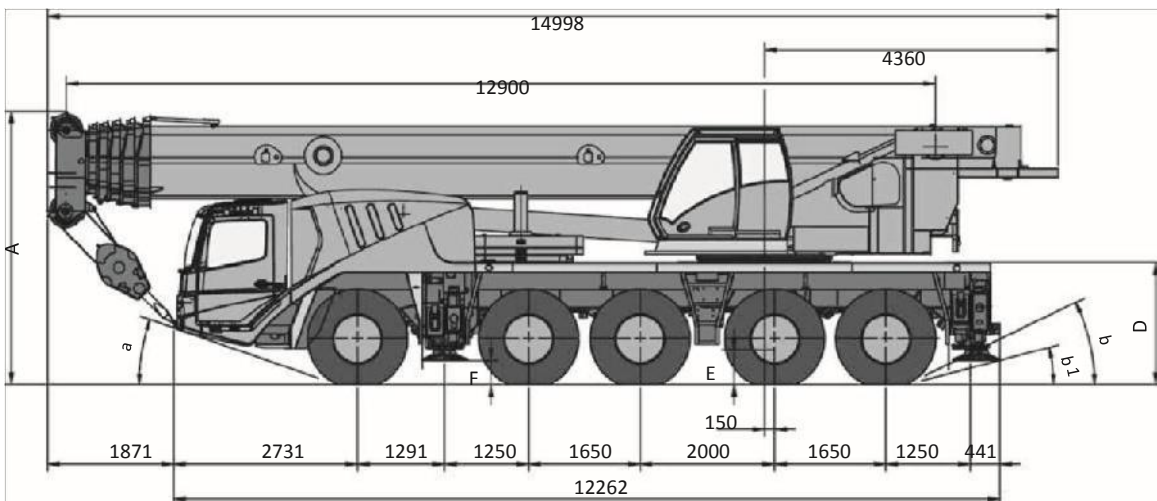
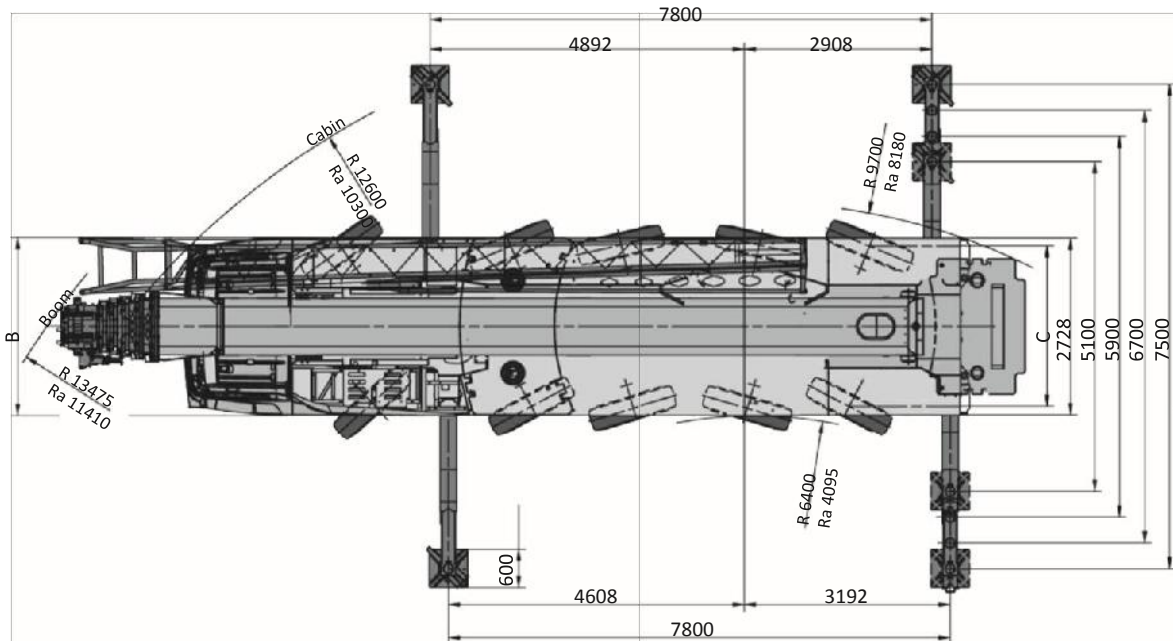
## ACCESORIOS


Winches	2
Tracción	10 x 6 x 10
Neumáticos	12 de 445/95 R25
Neumático de repuesto	Si (445/95 R25)
Plumin	11 - 32 m / 0/20/40° (1x6m & 1x8m insert)
Manual de operación	Si
Manual de servicio	Si
Tabla de carga	Si

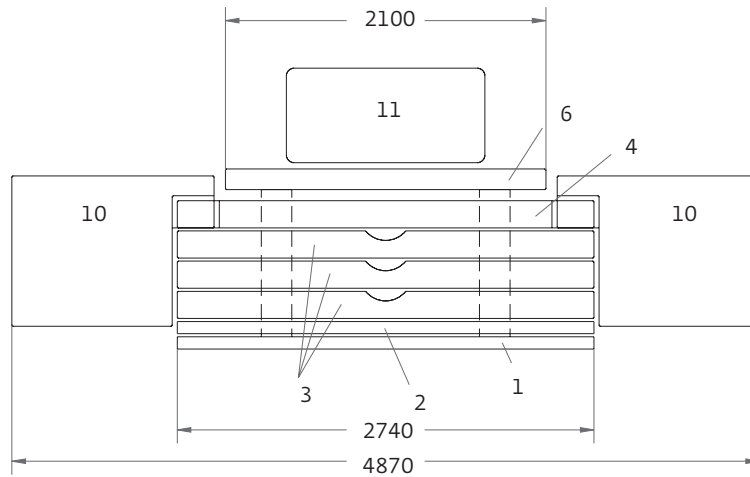
## IMÁGENES




## DIMENSIONES

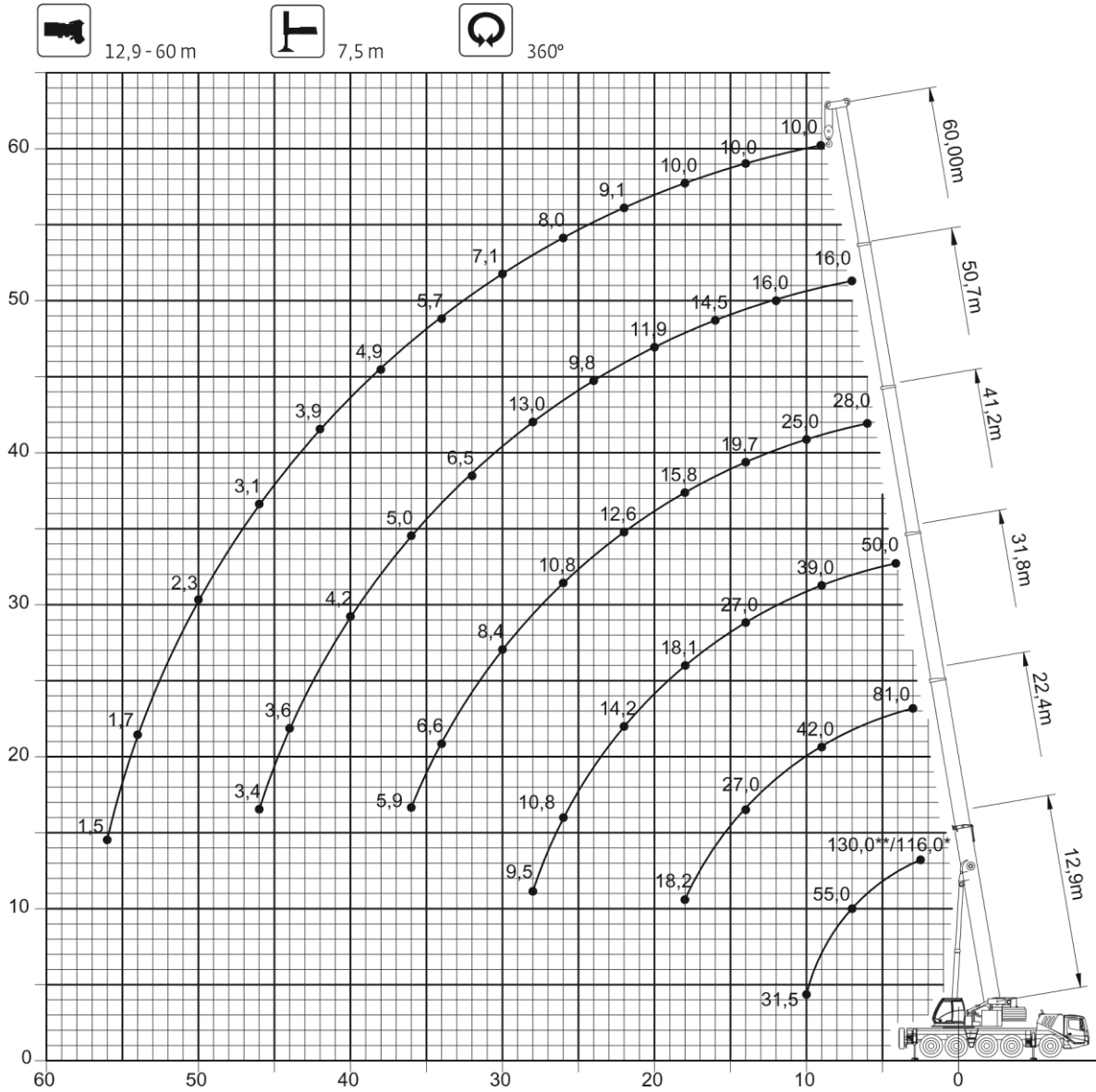


	A	A 130 mm*	B	C	D	E	F	a	b	b1
445/95R25	3995	3865	3000	2486	1800	485	386	20	25	19

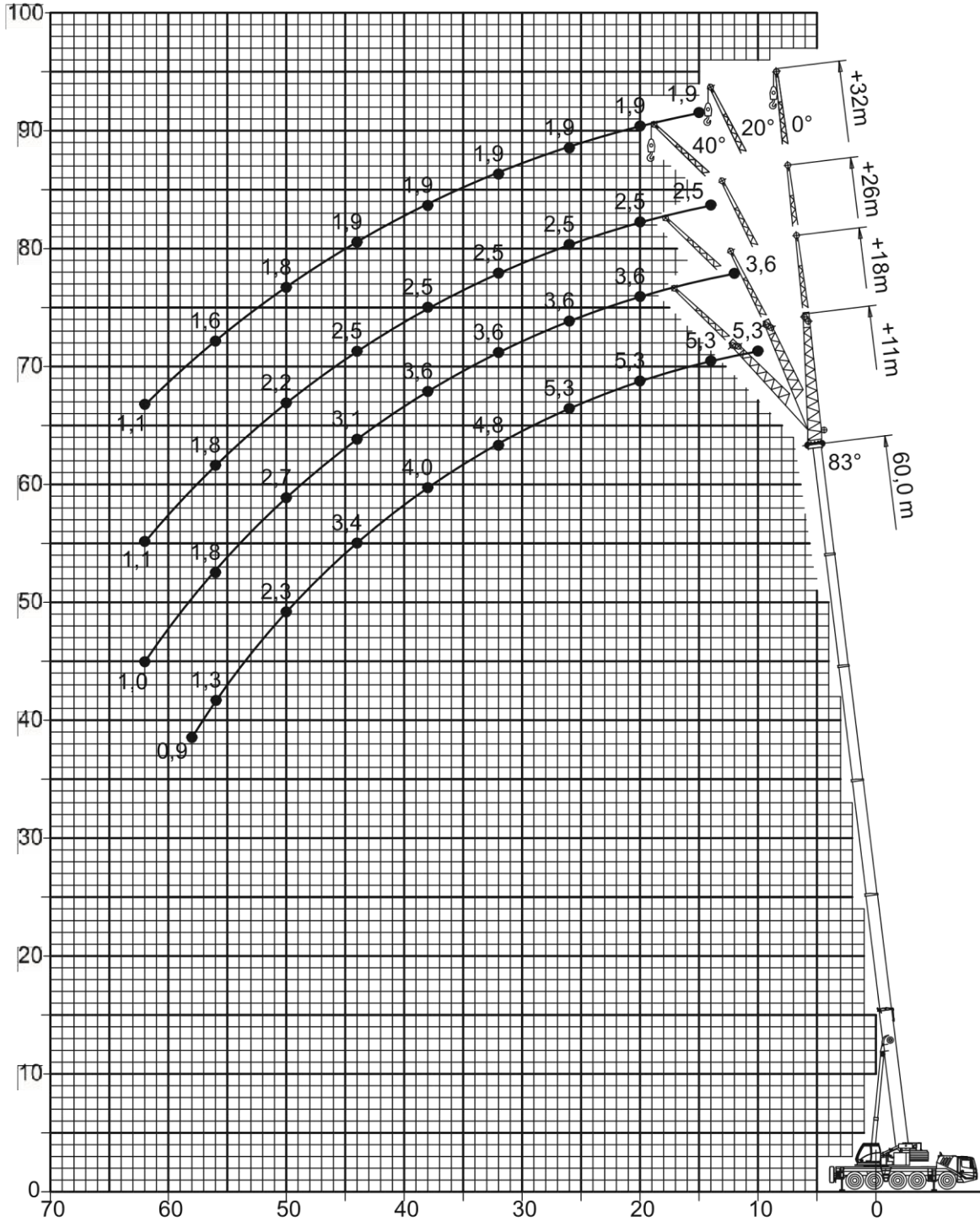
**DIMENSIONES**


	1	2	3	3	3	4	6	10	10	11
	2,5t	2,5t	5,0t	5,0t	5,0t	5,0t	2,5t	5,8t	5,8t	1,0t
1,0t										X
3,5t							X			X
6,0t	X						X			X
8,5t	X	X					X			X
11t	X		X				X			X
13,5t	X	X	X				X			X
16t	X		X	X			X			X
18,5t	X	X	X	X			X			X
21t	X		X	X	X		X			X
23,5t	X	X	X	X	X		X			X
26t	X		X	X	X	X	X			X
28,5t	X	X	X	X	X	X	X			X
40,1t	X	X	X	X	X	X	X	X	X	X





**DIGRAMA DE CARGA**



DIGRAMA DE CARGA







### TABLA DE CARGA

 12,9-60 m
  7,5 m
  360°
  40,1 t



EN 13000

m	12,90°	12,90	17,69	22,48	27,16	31,84	36,45	41,24	45,99	50,71	55,39	60,00	m
2,2	130,0°/116,0°	-	-	-	-	-	-	-	-	-	-	-	2,2
3,0	94,5	93,5	86,0	81,0	65,0	-	-	-	-	-	-	-	3,0
4,0	81,0	79,0	76,5	71,0	65,0	50,0	-	-	-	-	-	-	4,0
5,0	70,5	68,0	67,5	63,5	60,5	49,5	38,0	-	-	-	-	-	5,0
6,0	62,0	59,5	60,0	57,5	54,5	47,0	37,0	28,0	20,5	-	-	-	6,0
7,0	55,0	52,5	53,0	52,0	50,0	44,0	35,0	28,0	20,5	16,0	-	-	7,0
8,0	48,0	46,5	47,0	47,0	46,0	41,5	33,0	28,0	20,5	16,0	11,6	-	8,0
9,0	41,0	41,0	42,0	42,0	41,5	39,0	31,5	26,5	20,5	16,0	11,6	10,0	9,0
10,0	31,5	31,5	38,0	38,0	37,5	37,0	29,5	25,0	20,5	16,0	11,6	10,0	10,0
11,0	-	-	34,5	34,5	34,0	34,5	28,0	23,5	20,5	16,0	11,6	10,0	11,0
12,0	-	-	31,5	31,5	31,0	32,0	26,5	22,5	19,5	16,0	11,6	10,0	12,0
13,0	-	-	29,0	29,0	28,5	29,5	25,0	21,0	18,6	16,0	11,6	10,0	13,0
14,0	-	-	25,0	27,0	26,0	27,0	23,5	19,7	17,7	15,8	11,6	10,0	14,0
15,0	-	-	-	24,0	24,5	24,5	22,5	18,7	16,8	15,2	11,6	10,0	15,0
16,0	-	-	-	21,5	22,5	22,0	21,5	17,6	15,9	14,5	11,6	10,0	16,0
18,0	-	-	-	18,2	18,6	18,1	18,9	15,8	14,4	13,0	11,6	10,0	18,0
20,0	-	-	-	-	15,7	16,1	15,9	13,9	12,7	11,9	11,1	9,7	20,0
22,0	-	-	-	-	13,4	14,2	13,6	12,6	11,5	10,8	10,3	9,1	22,0
24,0	-	-	-	-	9,6	12,3	11,8	11,6	10,4	9,8	9,4	8,6	24,0
26,0	-	-	-	-	-	10,8	10,2	10,8	9,5	8,9	8,6	8,0	26,0
28,0	-	-	-	-	-	9,5	9,3	9,5	8,4	8,2	7,9	7,6	28,0
30,0	-	-	-	-	-	-	8,7	8,4	7,5	7,5	7,3	7,1	30,0
32,0	-	-	-	-	-	-	8,0	7,5	6,9	6,5	6,5	6,4	32,0
34,0	-	-	-	-	-	-	-	6,6	6,2	5,7	5,7	5,7	34,0
36,0	-	-	-	-	-	-	-	5,9	5,9	5,0	5,3	5,3	36,0
38,0	-	-	-	-	-	-	-	-	5,5	4,5	5,0	4,9	38,0
40,0	-	-	-	-	-	-	-	-	5,0	4,2	4,7	4,5	40,0
42,0	-	-	-	-	-	-	-	-	4,5	3,9	4,4	3,9	42,0
44,0	-	-	-	-	-	-	-	-	-	3,6	3,9	3,5	44,0
46,0	-	-	-	-	-	-	-	-	-	3,4	3,5	3,1	46,0
48,0	-	-	-	-	-	-	-	-	-	-	3,1	2,7	48,0
50,0	-	-	-	-	-	-	-	-	-	-	2,7	2,3	50,0
52,0	-	-	-	-	-	-	-	-	-	-	-	2,0	52,0
54,0	-	-	-	-	-	-	-	-	-	-	-	1,7	54,0
56,0	-	-	-	-	-	-	-	-	-	-	-	1,5	56,0

 12,9-60 m
  7,5 m
  360°
  23,5 t



EN 13000

m	12,90°	12,90	17,69	22,48	27,16	31,84	36,45	41,24	45,99	50,71	55,39	60,00	m
2,2	119,0	-	-	-	-	-	-	-	-	-	-	-	2,2
3,0	94,5	92,0	86,0	81,0	65,0	-	-	-	-	-	-	-	3,0
4,0	81,0	77,5	76,5	71,0	65,0	50,0	-	-	-	-	-	-	4,0
5,0	70,5	66,0	66,5	63,5	60,5	49,5	38,0	-	-	-	-	-	5,0
6,0	62,0	57,5	57,5	57,0	54,5	47,0	37,0	28,0	-	-	-	-	6,0
7,0	55,0	50,0	50,5	50,5	49,5	44,0	35,0	28,0	20,5	16,0	-	-	7,0
8,0	48,0	44,5	45,0	45,0	41,5	40,5	33,0	28,0	20,5	16,0	11,6	-	8,0
9,0	39,5	39,0	39,5	38,5	36,5	34,5	31,5	26,5	20,5	16,0	11,6	10,0	9,0
10,0	31,5	31,5	34,5	33,0	32,5	30,0	29,5	25,0	20,5	16,0	11,6	10,0	10,0
11,0	-	-	29,5	28,5	28,5	26,5	26,5	23,5	20,5	16,0	11,6	10,0	11,0
12,0	-	-	25,5	25,5	25,5	24,5	23,5	22,0	19,5	16,0	11,6	10,0	12,0
13,0	-	-	22,5	22,5	22,5	23,0	21,5	19,9	18,6	16,0	11,6	10,0	13,0
14,0	-	-	20,0	20,0	19,8	20,5	19,3	18,0	17,3	15,8	11,6	10,0	14,0
15,0	-	-	-	17,8	18,0	18,5	17,5	16,7	15,7	15,2	11,6	10,0	15,0
16,0	-	-	-	16,6	16,9	16,6	16,0	16,0	14,3	14,1	11,6	10,0	16,0
18,0	-	-	-	13,8	14,0	13,6	13,3	13,7	12,0	11,8	11,6	10,0	18,0
20,0	-	-	-	-	11,7	11,4	12,0	11,5	10,7	10,0	10,1	9,7	20,0
22,0	-	-	-	-	9,9	9,6	10,2	9,7	9,9	8,5	8,9	8,9	22,0
24,0	-	-	-	-	6,2	8,2	8,8	8,2	8,6	7,8	8,3	7,7	24,0
26,0	-	-	-	-	-	7,0	7,6	7,0	7,4	7,3	7,3	6,7	26,0
28,0	-	-	-	-	-	6,0	6,6	6,0	6,3	6,6	6,3	5,8	28,0
30,0	-	-	-	-	-	-	5,7	5,2	5,5	5,7	5,4	5,0	30,0
32,0	-	-	-	-	-	-	5,2	4,5	5,1	5,0	4,7	4,3	32,0
34,0	-	-	-	-	-	-	-	4,2	4,6	4,4	4,0	3,6	34,0
36,0	-	-	-	-	-	-	-	3,9	4,0	3,8	3,5	3,1	36,0
38,0	-	-	-	-	-	-	-	-	3,6	3,3	3,0	2,6	38,0
40,0	-	-	-	-	-	-	-	-	3,1	2,8	2,5	2,1	40,0
42,0	-	-	-	-	-	-	-	-	2,7	2,4	2,1	1,7	42,0
44,0	-	-	-	-	-	-	-	-	-	2,1	1,8	1,4	44,0
46,0	-	-	-	-	-	-	-	-	-	1,8	1,4	1,0	46,0
48,0	-	-	-	-	-	-	-	-	-	-	1,2	-	48,0

\* 0° Por la parte trasera  
 \*\* 0° Por la parte trasera con equipo adicional