

Modelo
16000 S3



GRUA CELOSIA

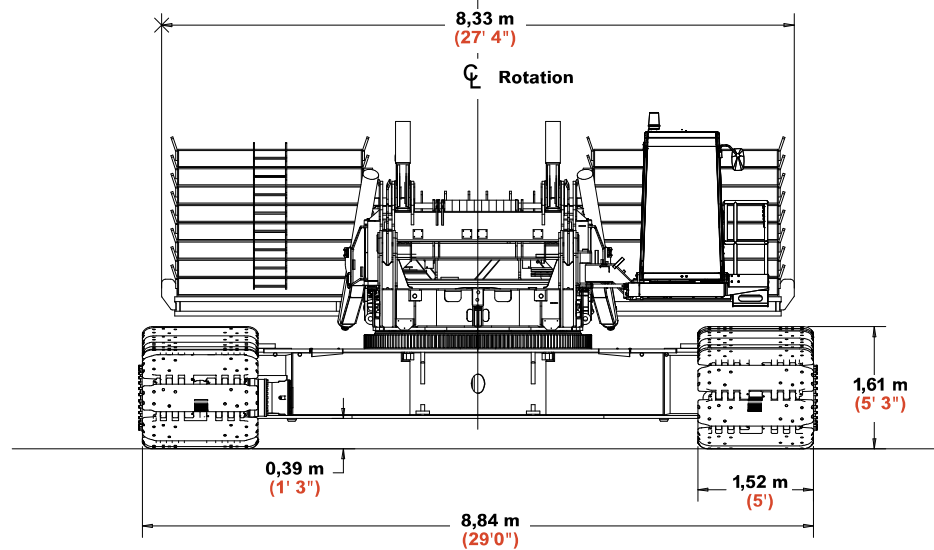
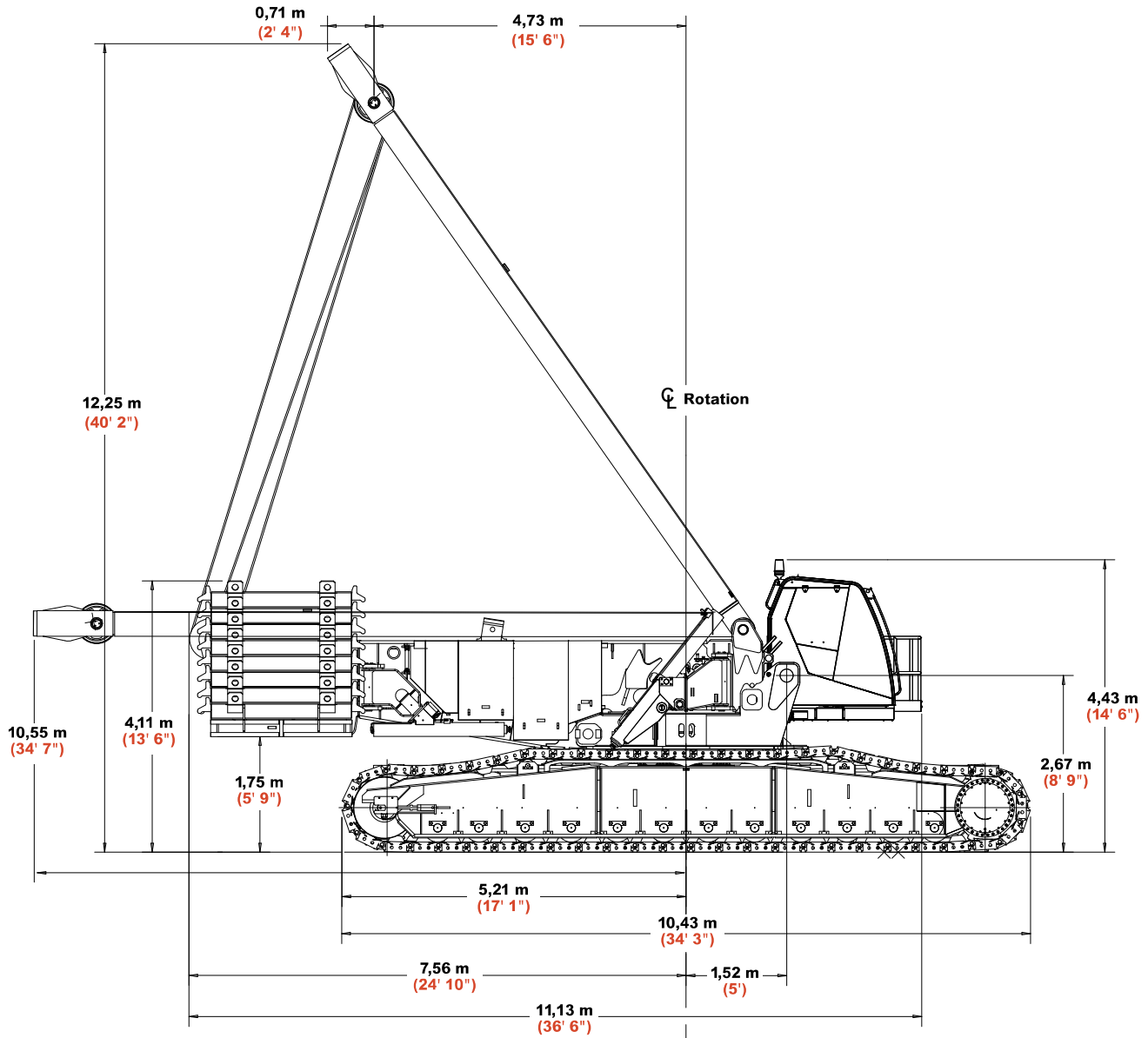
GC0002

ESPECIFICACIONES

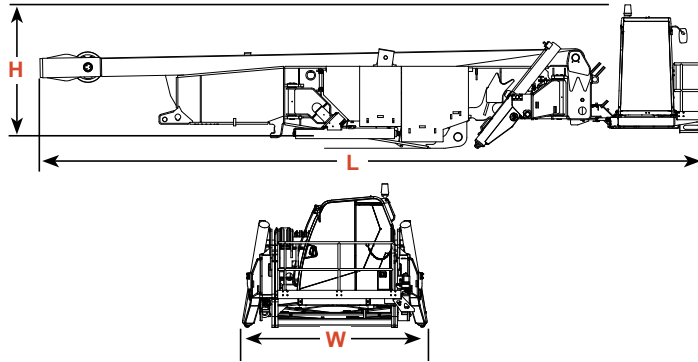
Marca	Manitowoc
Modelo	16000 Serie 3
Serie	16001105
Capacidad	440 ton
Año fabricación	2009
Sistema	EPIC
Nro de Winches	5
Motores hidraulicos	2
Motor	Cummins QSX15-500
Pluma pricipal	#58
Longitud pluma pricipal	120.0 m
Lufing Jib (Serie: 16005057)	#59
Longitud Lufing Jib	72.0 m
Max-Er (Serie: 16003020)	Wheeled, Back Mast, and Heavy section
Contrapeso de grua	150590 Kg
Contrapeso de plataforma	54430 Kg
Area de trabajo	360 grados
Elevacion de boom	0 a 82 grados
Capacidad del tanque combustible	250 galones (946 l)
Capacidad del tanque hidraulico	190 galones (719 l)
Accesorios	- Gancho 450 ton - Gancho 250 ton - Gancho 110 ton - Gancho 45 ton - Gancho 20 ton (Bola) - #58 Extend upper boom point 7 m



DIMENSIONES

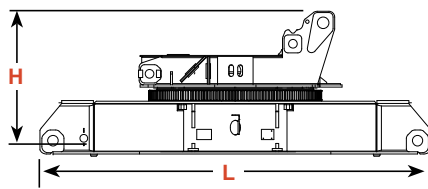


DIMENSIONES



Rotating Bed Assembly

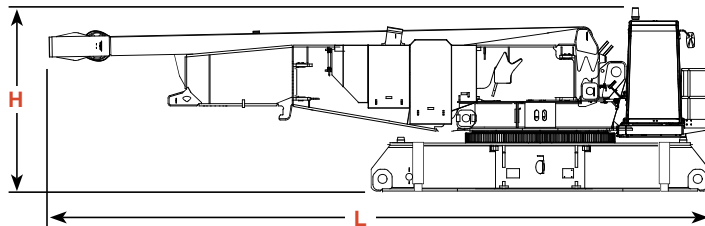
Length	13,25 m	43' 6"
Width	3,20 m	10' 6"
Height	2,87 m	9' 5"
Weight	39 612 kg	87,330 lb



Carbody Assembly

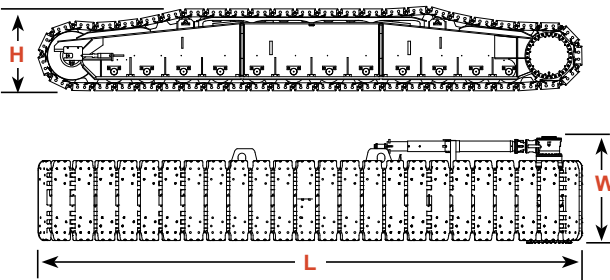
Length	6,78 m	22' 3"
Width	3,00 m	9' 10"
Height	2,52 m	8' 3"
Weight	28 161 kg	62,085 lb

Note: Weight includes rotating bed adapter frame with bearing turntable, four swing drives, and carbody.



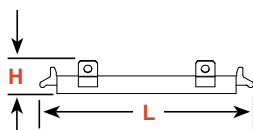
Rotating Bed & Carbody Assembly (Decked Version)

Length	6,78 m	22' 3"
Width	3,00 m	9' 10"
Height	3,20 m	10' 6"
Weight	64 982 kg	143,260 lb



Crawlers

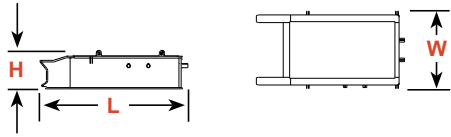
Length	10,43 m	34' 3"
Width	2,03 m	6' 8"
Height	1,61 m	5' 3"
Weight	32 665 kg	72,015 lb



Upper Counterweight

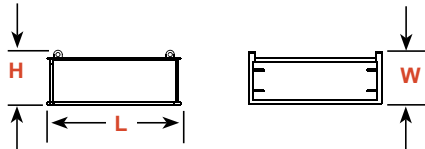
Series 1		x 10
Series 2		x 14
Series 3		x 16
Length	2,54 m	8' 4"
Width	2,61 m	8' 7"
Height	0,41 m	1' 4"
Weight	8 164 kg	18,000 lb

DIMENSIONES



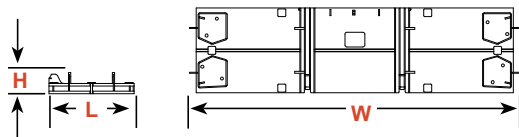
Carbody Center Counterweight		
Series 2		x 2
Series 3		x 2

Length	3,45 m	11' 4"
Width	1,80 m	5' 11"
Height	0,89 m	2' 11"
Weight	13 607 kg	30,000 lb



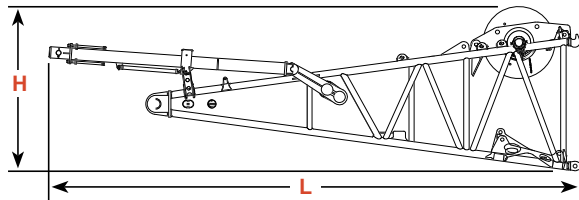
Carbody Side Counterweight		
Series 3		x 4

Length	2,18 mm	7' 2"
Width	0,86 m	2' 10"
Height	0,89 m	2' 11"
Weight	6 803 kg	15,000 lb



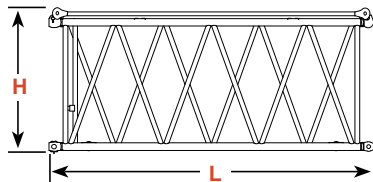
Upper Counterweight Tray		
--------------------------	--	--

Length	2,14 m	7' 0"
Width	8,33 m	27' 4"
Height	0,53 m	1' 9"
Weight	19 958 kg	44,000 lb



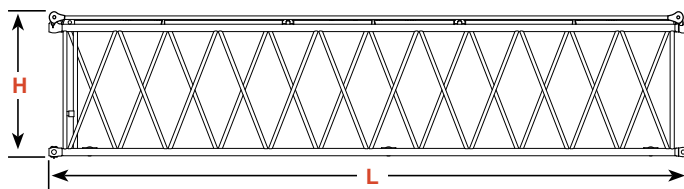
No. 58 Boom Butt, Drum 1, Luffing Drum, Wire Rope		
		x 1

Length	10,13 m	33' 3"
Width	2,96 m	9' 9"
Height	3,10 m	10' 2"
Weight	21 609 kg	47,640 lb



No. 58 Boom Insert 6,0 m (19' 8") & Straps		
		x 1

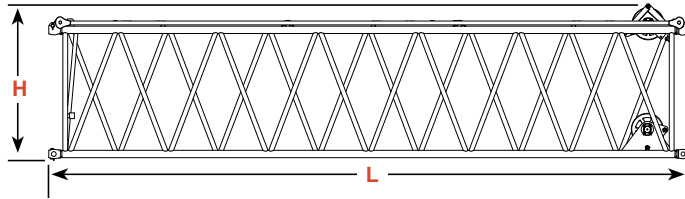
Length	6,19 m	20' 3"
Width	2,96 m	9' 9"
Height	2,67 m	8' 9"
Weight	2 562 kg	5,650 lb



No. 58 Boom Insert 12,0 m (39' 5") & Straps		
		x 1

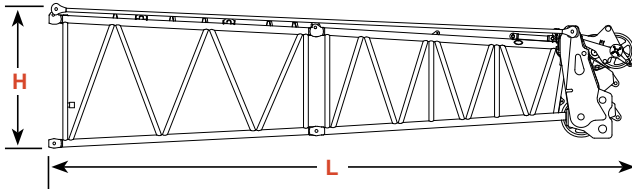
Length	12,19 m	40' 0"
Width	2,96 m	9' 9"
Height	2,65 m	8' 8"
Weight	4 236 kg	9,340 lb

DIMENSIONES



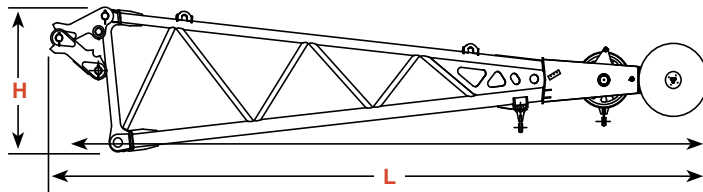
No. 58 Boom Insert Heavy 12,0 (39' 5") with Sheave x 1

Length	12,19 m	40' 0"
Width	2,96 m	9' 9"
Height	2,67 m	8' 9"
Weight	5 595 kg	12,335 lb



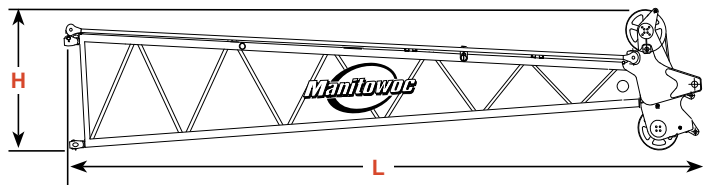
No. 58 Boom Top 5,0 m (16' 5") with 5,0 (16' 5") Transitional Insert & Straps x 1

Length	11,41 m	37' 5"
Width	2,96 m	9' 9"
Height	2,67 m	8' 9"
Weight	11 373 kg	25,075 lb



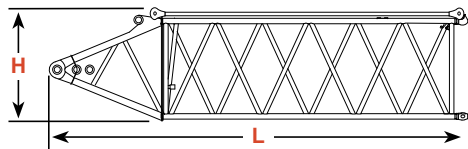
No. 58 Extended Upper Boom Point 7,0 m (23' 0") x 1

Length	9,52 m	31' 3"
Width	2,60 m	8' 6"
Height	1,99 m	6' 6"
Weight	3 674 kg	8,100 lb



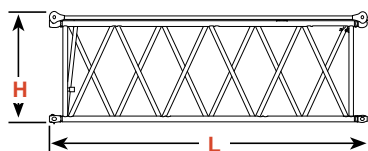
No. 59 Luffing Jib Top 11,0 (36' 1") x 1

Length	11,95 m	39' 2"
Width	2,69 m	8' 10"
Height	2,54 m	8' 4"
Weight	6 015 kg	13,260 lb



No. 59 Luffing Jib Butt 7,0 (23' 0") x 1

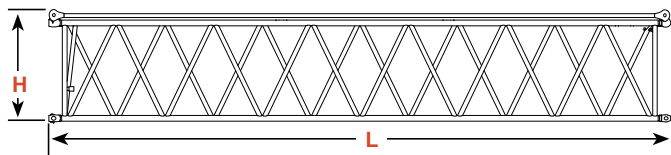
Length	7,15 m	23' 6"
Width	2,69 m	8' 10"
Height	2,17 m	7' 1"
Weight	2 722 kg	6,000 lb



No. 59 Jib Insert 6,0 (19' 8") x 1

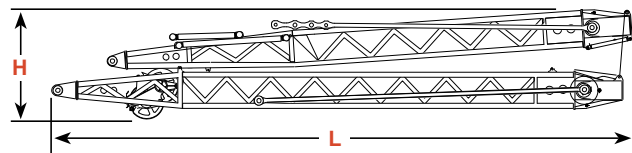
Length	6,19 m	20' 3"
Width	2,69 m	8' 10"
Height	2,17 m	7' 1"
Weight	1 685 kg	3,715 lb

DIMENSIONES



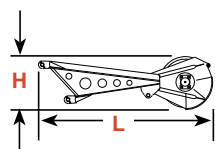
No. 59 Jib Insert 12,0 (39' 5") x 1

Length	12,19 m	40' 0"
Width	2,69 m	9' 9"
Height	2,17 m	7' 1"
Weight	2 928 kg	6,455 lb



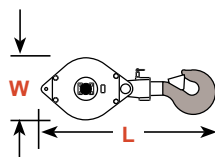
No. 59 Jib Strut with point sheaves and straps 11,5 m (37' 9") x 1

Length	12,46 m	40' 11"
Width	2,69 m	8' 10"
Height	2,27 m	7' 5"
Weight	9 287 kg	20,475 lb



No. 59 Luffing Jib Upper Point Roller Assembly 11,5 m (37' 9")x 1

Length	2,64 m	8' 8"
Width	0,41 m	1' 4"
Height	0,81 m	2' 8"
Weight	460 kg	1,014 lb



Hook block for 28 mm (1-1/8") wire rope

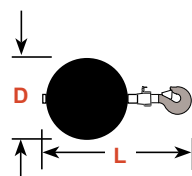
Capacity	410 mt	450 t	Length	3,37 m	11' 1"
Weight	9 661 kg	21,300 lb	Width	1,19 m	3' 11"

Capacity	227 mt	250 t	Length	2,72 m	8' 11"
Weight	5 257 kg	11,590 lb	Width	0,93 m	3' 0"

Capacity	100 mt	110 t	Length	2,28 m	7' 6"
Weight	3 404 kg	7,500 lb	Width	0,86 m	2' 10"

Capacity	41 mt	45 t*	Length	1,90 m	6' 3"
Weight	1 179 kg	2,600 lb	Width	0,91 m	3' 0"

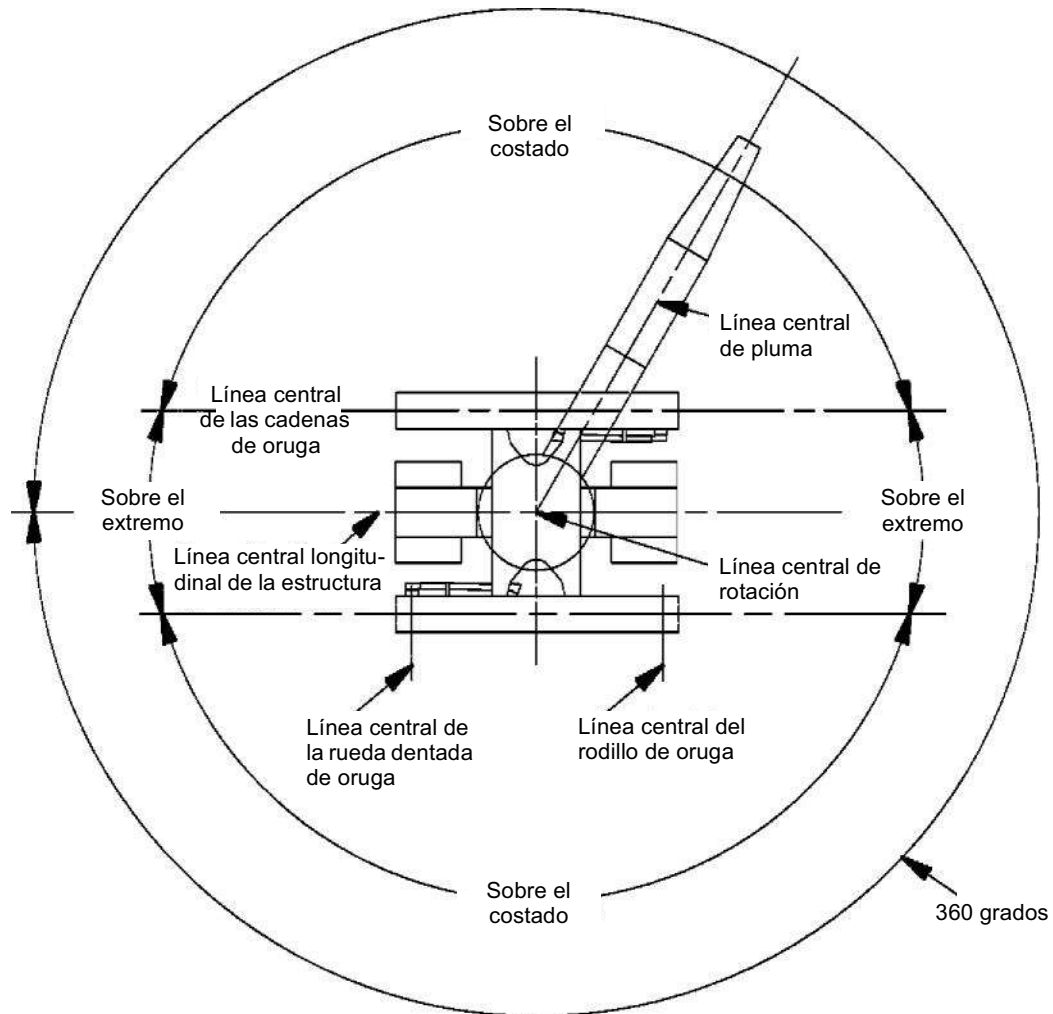
*Assembly block



Weight Ball

Capacity/Swivel	18 mt	20 t	Diameter	0,47 m	1' 7"
Weight	771 kg	1,700 lb	Length	1,23 m	4' 0"

DIAGRAMA DE ALCANCE



Estas líneas determinan la posición limitadora de cualquier carga al trabajar dentro de las zonas indicadas.

Las zonas de funcionamiento aprobadas para las máquinas sobre orugas se ilustran en el diagrama de arriba.

Se permiten los trabajos de elevación solamente en las zonas para las cuales se ilustran capacidades en las tablas de capacidades.

DIAGRAMA DE ALCANCE

